

**PLAN VIEW**  
SCALE 1:100

REFER TO DRAWING S-01 AND PROJECT SPECIFIC CERTIFICATION DOCUMENT FOR ALL NOTES

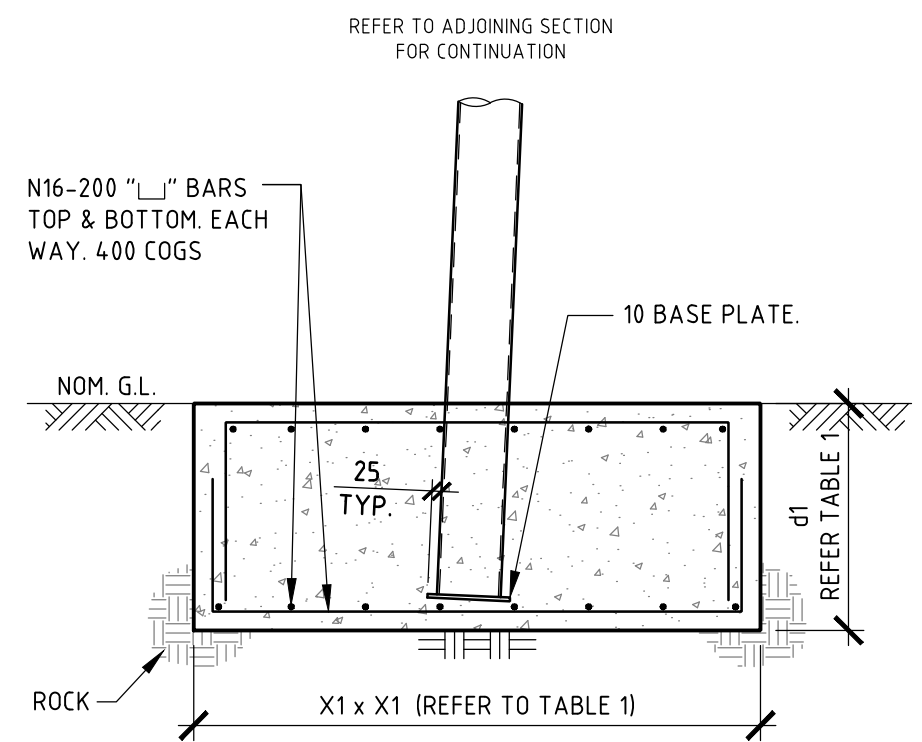
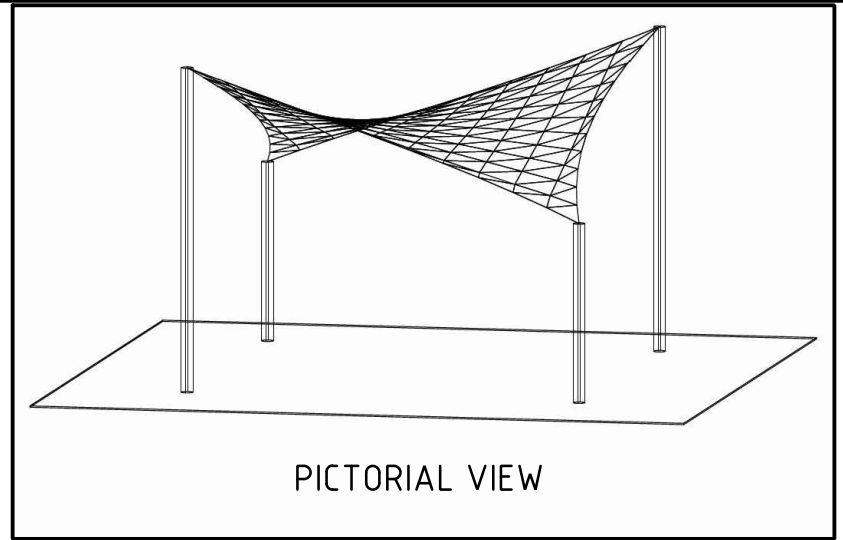
**PRESTRESS NOTES**  
TO ENSURE ADEQUATE DESIGN PRESTRESS IS APPLIED DURING INSTALLATION, THE FOLLOWING TENSIONING IS TO BE ADOPTED FOR EACH LENGTH OF CATENARY CABLE. ONCE THE CATENARY CABLE IS MADE TAUGHT, AN ADDITIONAL 10mm OF TENSIONING IS TO BE APPLIED FOR EACH LENGTH OF CABLE. I.E. 40mm TOTAL FOR THE 6m x 6m HYPAR.

**FOUNDATION NOTES**  
1. TWO FOOTING OPTIONS HAVE BEEN DETAILED, CASE WHERE FOUNDING MATERIAL IS ROCK OR COHESIVE, I.E. MEDIUM CLAY. REFER TO ACCOMPANYING PROJECT SPECIFIC CERTIFICATION DOCUMENT WHICH SPECIFIES WHICH FOOTING TYPE IS TO BE USED.  
2. IN THE EVENT THAT UNUSUAL SOIL CONDITIONS ARE FOUND THE ENGINEER IS TO BE CONTACTED

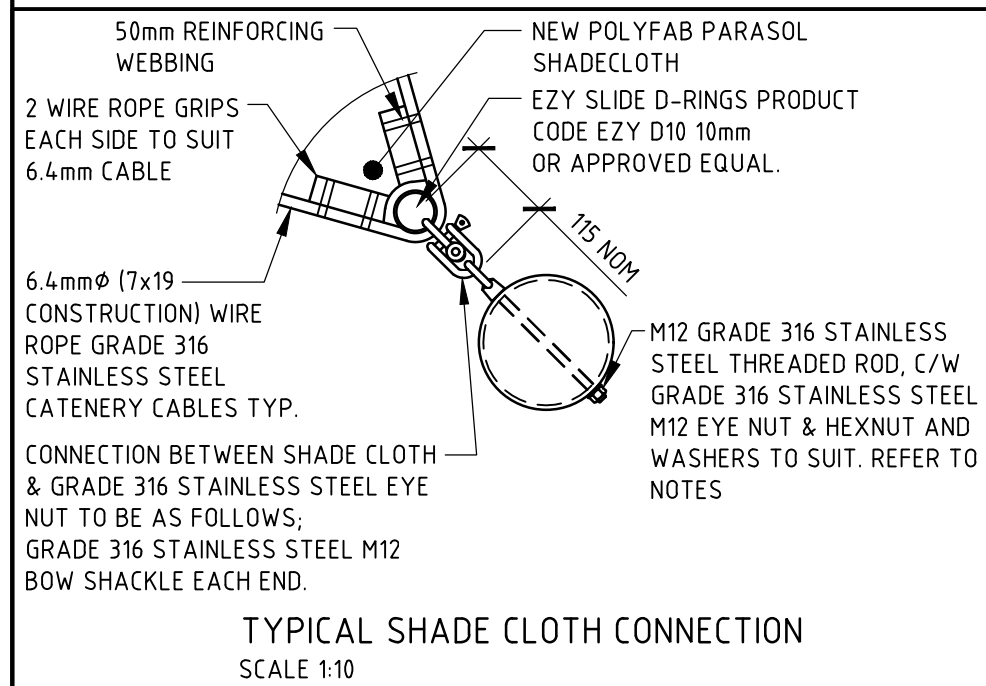
NOTE: REFER TO S-01 FOR PROJECT SPECIFIC CERTIFICATION DOCUMENT FOR ALL NOTES

TABLE 1							
L1 (mm)	C1 (mm)	d1 (mm)	X1 (mm)	h1 (mm)	h2 (mm)	Lpier (mm)	COLUMN (mm)
DETAILS ONLY AVAILABLE UPON REQUEST FROM IZZAT CONSULTING ENGINEERS							

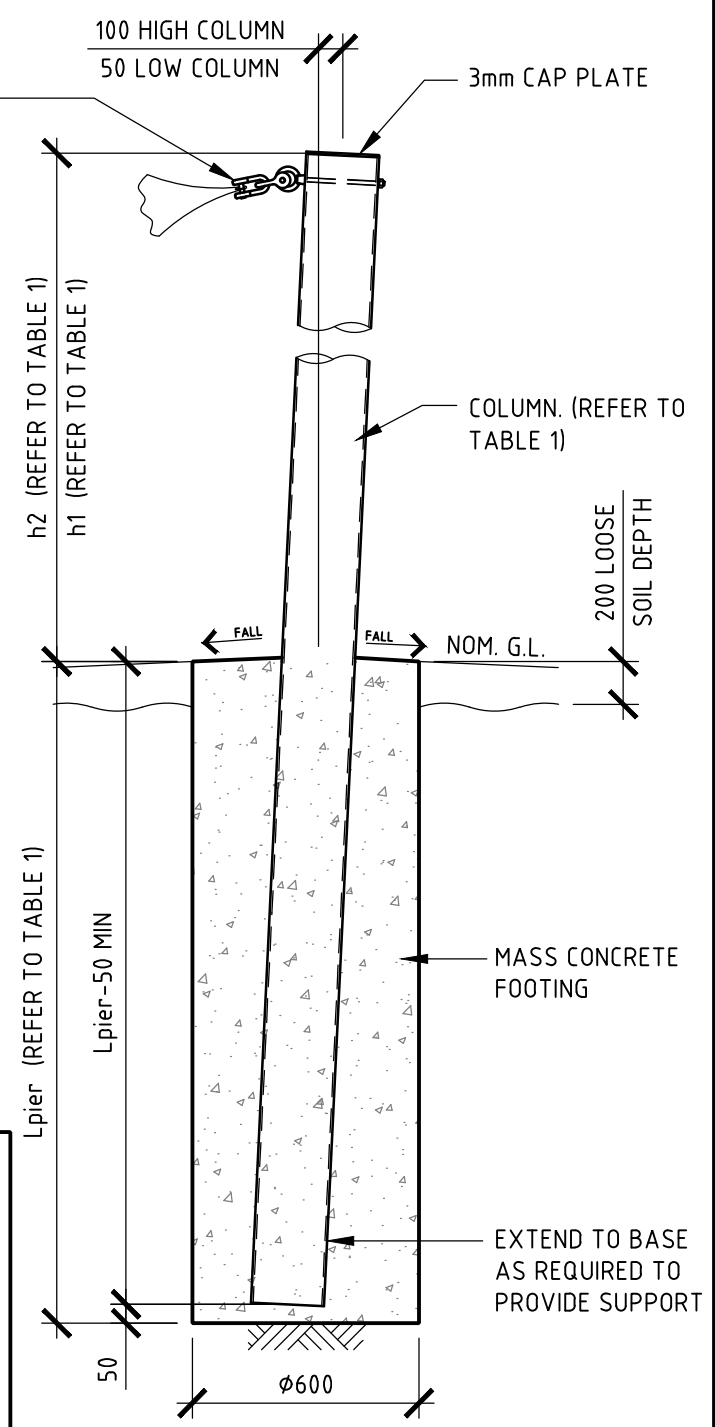
THIS DESIGN CAN ONLY BE USED IN CONJUNCTION WITH POLYFAB PARASOL COMMERCIAL GRADE SHADE CLOTH.



**PAD FOOTING OPTION**  
WHERE FOUNDING IN ROCK



**TYPICAL SHADE CLOTH CONNECTION**  
SCALE 1:10



**SECTION A**  
SCALE 1:20  
**BORED PIER OPTION**  
WHERE FOUNDING IN COHESIVE SOIL

**NOT FOR CONSTRUCTION**  
**FOR MARKETING ONLY**

THE IDEAS, INFORMATION AND CONCEPTS CONTAINED IN THIS DOCUMENT ARE THE PROPERTY OF IZZAT CONSULTING ENGINEERS PTY. LIMITED. REPRODUCTION OR RE-USE OF THIS DOCUMENT OR THE INFORMATION CONTAINED WITHIN IS NOT PERMITTED WITHOUT WRITTEN AUTHORISATION. NON COMPLIANCE WITH THE ABOVE IS AN INFRINGEMENT OF COPYRIGHT.

**IZZAT**  
CONSULTING ENGINEERS  
A DOCKRILL FAMILY COMPANY

**Different thinking. Smarter solutions.**

Member of:  
**CONSULT AUSTRALIA**

IZZAT CONSULTING ENGINEERS PTY LTD  
ABN: 60 110 255 582  
Newcastle Office:  
4, 56 Hudson Street,  
Hamilton, NSW 2303  
PO Box 988 Hamilton 2303  
P: +61 2 4940 0090  
F: +61 2 4940 0091  
E: mail@izzat.com.au  
W: www.izzat.com.au

PROJECT: STANDARD SHADE STRUCTURE DESIGNS

CLIENT: NOLAN GROUP

DRAWING TITLE: HYPAR PLAN AND DETAILS				
DESIGN: T.D./A.C.	DRAWN: R.E.	CHECKED: T.D.	SCALE: 1:100 U.N.O.	A3 400x277
DATE: MARCH 2019	JOB NUMBER: J6149	DRAWING NUMBER: S-03	REVISION: A	